



**ALASKA DIVISION OF HOMELAND SECURITY &
EMERGENCY MANAGEMENT**
Daily Situation Report
25-343 December 9, 2025



Toll-Free 1.800.478.2337

Anchorage Area 907.428.7000

SEOC 907.428.7100

<u>SEOC Preparedness Level</u> Level 1 Routine Operations	http://ready.alaska.gov	<u>Alaska Military Installation Force</u> <u>Protection Level:</u> FPCON Bravo
<u>NTAS Bulletin</u> There are no current advisories. https://www.dhs.gov/national-terrorism-advisory-system	<u>Maritime Security (MARSEC)</u> Level - 1 Minimum Appropriate Security Measures	

(Significant changes from previous situation reports are red.)

Significant Issues:

Matanuska-Susitna Borough (Mat-Su): Windstorm/Power Outage

A cold front brought strong winds (up to 80 mph+) and cold weather to the Matanuska-Susitna Valley starting Friday and through today. The front is followed by very cold temperatures.

- At the height of the storm, over 71,000 residents were without power for over 24 hours. As of this report, over 1,200 remain without power.
- A shelter, managed by the Red Cross at the Wasilla Menard Sports Center served as a warming site for 30 yesterday and sheltered 17 overnight.
- Most Mat-Su schools closed again today.
- Mat-Su Borough is engaged in response and will begin initial damage assessment as the winds diminish.
- The Borough has not requested state response assistance.

Napaskiak Power Disruption:

- Yesterday the city of Napaskiak declared a local disaster emergency in response to their power outage from this weekend's ice storm and wind.
- Alaska Energy Authority (AEA) and the community are engaged in a response with AEA lineman and mechanic expected in the community today.
- Napaskiak school has power, and residents are using personal generators.
- SEOC continues to follow-up with the community.

Division of Homeland Security and Emergency Management (DHSEM) Public Information:

For current press release, see: <https://ready.alaska.gov/PublicInformation/PressReleases>

Department of Health (DOH):

Alaska SNAP Recipients Granted Temporary Hot Foods Waiver Following Western Alaska Storm Damage Press Release published on Dec 2, click [here](#) for more information.

For resources and current information, see: <https://health.alaska.gov/en/>

Travel Alerts and Conditions:

Klondike Hwy was closed yesterday while Canadian DOT conducted avalanche mitigation. The highway has reopened but there is still a travel advisory in place due to strong winds blowing snow and black ice in sections.

For current driving conditions, dial 511 or visit: <https://511.alaska.gov/>

Barry Arm Landslide / Tsunami Risk:

For the latest information on the Barry Arm Landslide and Tsunami risk, click here:

<https://dggs.alaska.gov/hazards/barry-arm-landslide.html>

Earthquakes:

United States Geological Service (USGS) Earthquake Information:

<https://www.usgs.gov/programs/earthquake-hazards>

National Tsunami Warning Center: <https://tsunami.gov/>

Alaska Volcanoes:

Great Sitkin Alert Level: **Watch** and Aviation Color Code: **Orange**

Shishaldin Alert Level: **Advisory** and Aviation Color Code: **Yellow**

For Alaska Volcano updates, go to: <https://www.avo.alaska.edu/>

Air Quality Index (AQI) Advisories:

Fairbanks and North Pole - Air Quality Stage 2 Alert until 2 PM Tuesday

For the most up-to-date Air Quality Index Advisories:

<https://dec.alaska.gov/Applications/Air/airtoolsweb/Advisories>

Spills of Oil and Hazardous Substances:

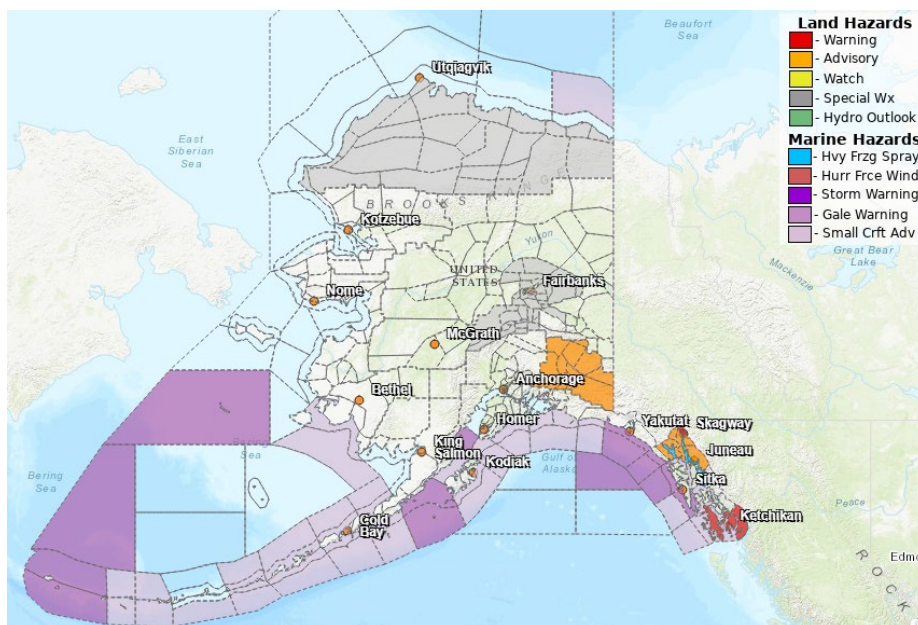
The Alaska Division of Environmental Conservation (ADEC) Spill Prevention and Response page is located at: <https://dec.alaska.gov/spar/ppr/spill-information/response/>

Alaska Cyber Security Information:

State Employees may sign up for cybersecurity notifications and alerts at:

<https://oit.alaska.gov/security>

Significant Weather:



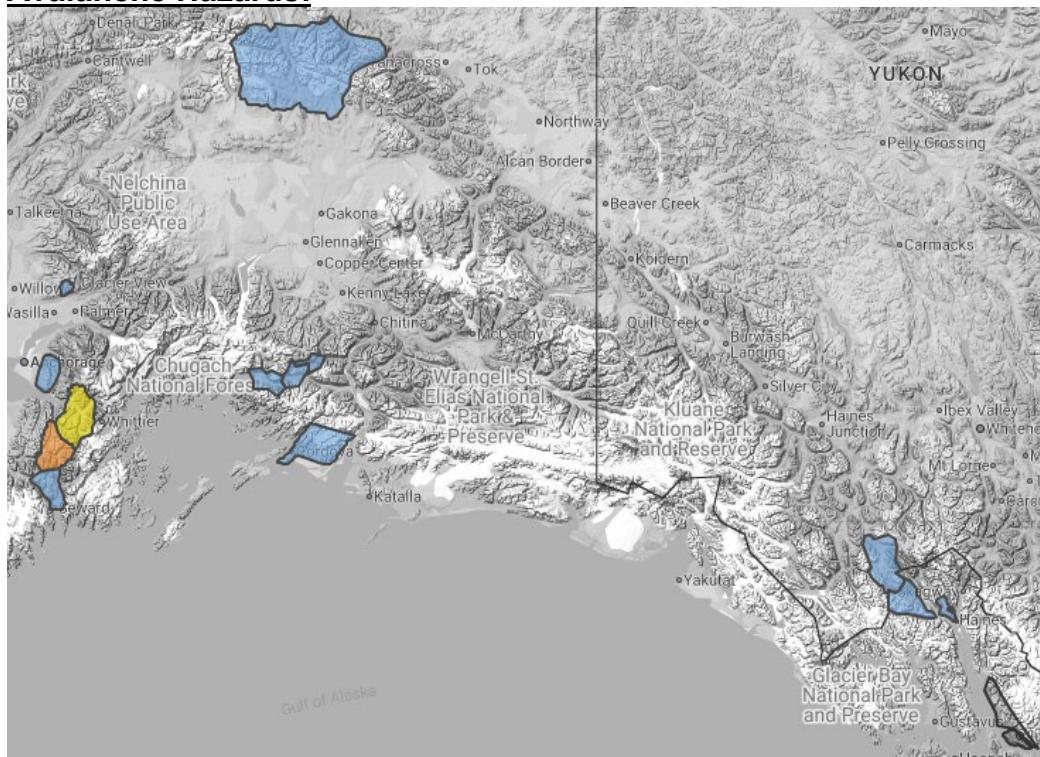
Special Weather Statement – For the much of the northern areas of the state (Arctic Coast to Southern Denali Borough) Late week pattern change: a storm system tracking east across the Arctic Ocean brings warming temps on Thursday leading to snow showers and reduced visibility through Friday, ending Friday night. Below normal temps are likely to return early next week.

Cold Weather Advisory and Extreme Cold Warning – Glacier Bay; City and Borough of Juneau; Municipality of Skagway; Haines Borough and Klukwan. Dangerously cold wind chills in effect through Wednesday afternoon.

Winter Storm Warning – Prince of Wales Island, City and Borough of Wrangell, City of Hyder. Snow accumulations of 4-7 inches, with more in some areas. In effect until early Wednesday morning.

For more information, go to <https://weather.gov/arh>

Avalanche Hazards:



Hatcher Pass – Moderate at upper elevations

Chugach State Park – Forecast not available yet, see link below for discussion and observations.

Turnagain Pass and Girdwood – Moderate above 1,000; Low below treeline.

Summit Lake – Considerable above 2,500; Moderate between 1,000-2,500; Low below 1,000

Seward and Lost Lake – Early season conditions with minimal coverage

Valdez Maritime, Intermountain, and Continental – Forecast not available yet, see link below for forecast discussion and observations

For more information and the most current avalanche conditions, go to <https://alaskasnow.org>

The Next Situation Report will be on December 9, 2025. A significant change in situation or threat level will prompt an interim report. This report is posted on the internet at <https://ready.alaska.gov/sitrep>.

To register for email distribution, go to: <http://list.state.ak.us/mailman/listinfo/dhsem.situation.report>.

Direct questions regarding this report to the SEOC at 907-428-7100 or seoc@alaska.gov.